

STATUS INSTRUMENTS  
STATUS INSTRUMENTS  
STATUS INSTRUMENTS

# LOOP POWERED LED INDICATOR DM700/I

- ▶ LOCAL TRANSMITTER DISPLAY  
PRESSURE, LEVEL, FLOW, TEMPERATURE, RH, ETC.
- ▶ EX & NEMA 4X HOUSINGS
- ▶ PUSH BUTTON PROGRAMMING  
(NO REFERENCE SIGNAL REQUIRED)
- ▶ 4 DIGIT LED DISPLAY
- ▶ 1/2" NPT FITTINGS
- ▶ CUSTOM LINEARIZATION
- ▶ FM & ATEX APPROVAL PENDING
- ▶ HART TRANSPARENT



## INTRODUCTION

The Model DM700/I Cap is a two wire current loop indicator that is powered by the 4-20 mA DC process signal it is displaying. The face of the Cap houses a 4 digit red LED display. The back contains the screw terminal connections and three push buttons used to program and calibrate the unit by means of a simple menu. The menu allows the user to select units, input/output scaling, offset, decimal point position, and password protection. The DM700/I contains several linearizations which can be applied to display: square root,  $x 3/2$ ,  $x 5/2$  or a user defined 19 segment linearization curve.

The entire DM700/I is sealed in the cap that fits directly into the SCH series of NEMA 4X and Explosion Proof housings. Housings have provisions for including temperature transmitters. Optional kits are available for pipe mounting, DIN rail mount or placement of the Cap into other style housings.

STATUS INSTRUMENTS INC.

PO Box 548, 456 Park Ave., Scotch Plains, NJ 07076  
Phone: (800) 700-3272 Fax: (800) 700-5468 (US & CA only)  
Phone: (908) 490-0232  
Email: rc@statinst.com Internet Address: www.statinst.com

# LOOP POWERED LED INDICATOR DM700/I

## SPECIFICATION @ 68°F

Input Range	4-20 mA Input -1999 to 9999 DP selectable in any position
Linearization	Linear, Square Root, Power 3/2, Power 5/2, User
User Characteristic	Up to 19 segments by straight line interpolation
Accuracy	+/- 0.01% FS
Hart Transparent	
Power	Loop powered
Loop Drop	< 4.0 V @ 20 mA

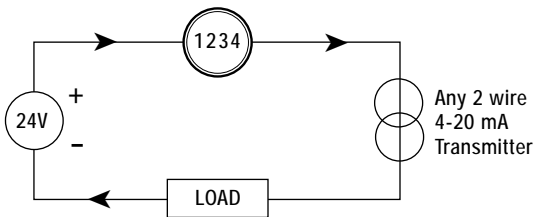
## General

Display	4 Digits LED
Ambient	-4° to 167°F
IS Approval	FM and ATEX pending
Ambient storage	-58 to 185°F
Ambient humidity	10 to 90% RH
EMC emissions	BS EN61326
EMC immunity	BS EN61326

## MECHANICAL DETAILS

Connections	Screw Terminal
Wire size:	16 AWG Max.

### DM700/I Connection Drawing



## ORDER CODE

DM700/I / HOUSING /

SCH4/A,B, C or D - NEMA 4X, IP67  
SCH15 - Stainless Steel, NEMA 4X, IP67  
SCH16 - Aluminum EX FM(3615)  
SCH16L - with "L" Option Mounting Lugs

SCH4/A - supplied if no  
housing specified

O - General Purpose  
X - Intrinsically Safe  
FM & ATEX Pending

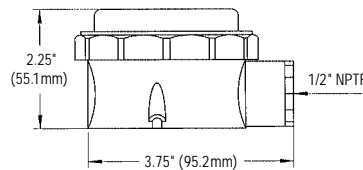
## ACCESSORIES

Din Rail Adapter for SCH4 RMK-5  
Wall Mount Bracket for SCH4 RMK-7  
Mounting Kit for SCH16 ACC700-01  
2" Pipe Mounting Bracket INQUIRE

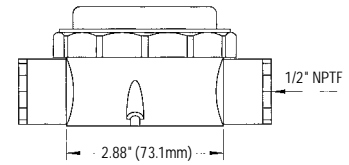


## MECHANICAL DETAILS

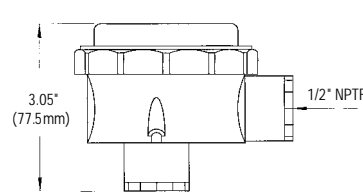
(SCH4/ Housings, Polycarbonate,  
NEMA 4X, IP67)



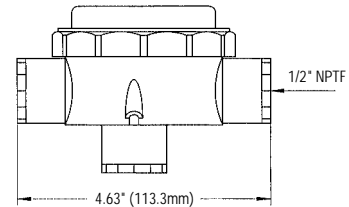
SCH4/A - 1 side port



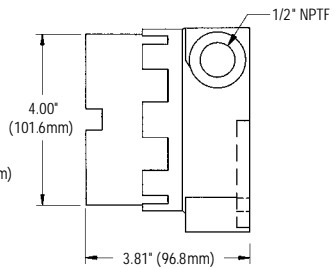
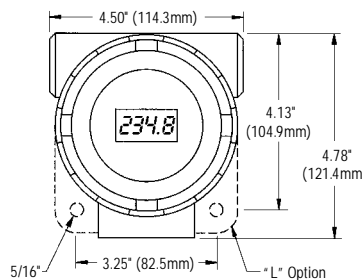
SCH4/B - 2 side ports



SCH4/C - 1 side port and 1 base port



SCH4/D - 2 side ports and 1 base port



## SCH16

Housing, FM(3615) Explosion-proof Aluminum  
blue polyester powder coating

